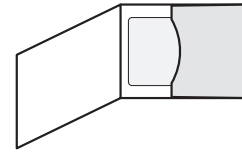
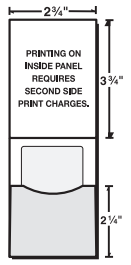
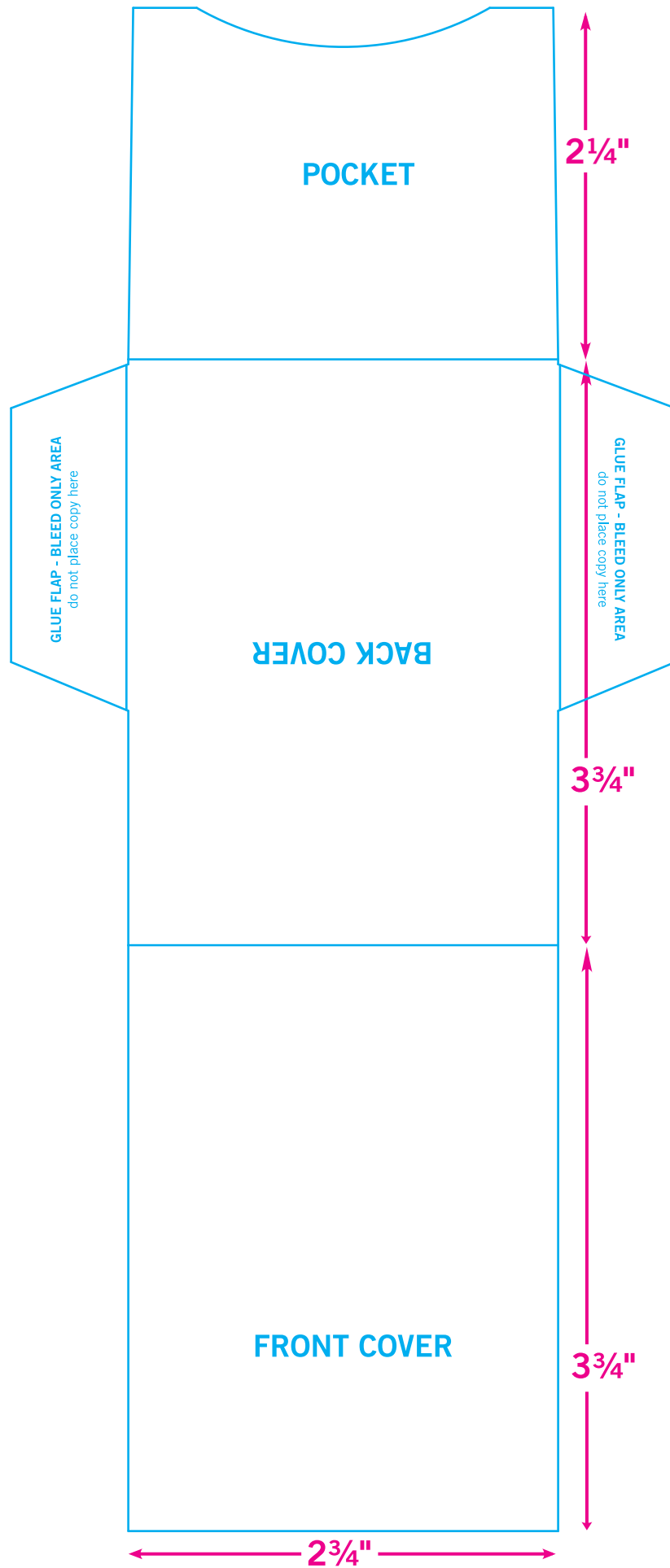


27-04



Can be used vertical or horizontal orientation

BLEEDS:
Extend $\frac{1}{8}$ "
past edge
of Dieline



SECOND SIDE OF PRINTED SHEET (RSP)

- printing on the inside panel requires second side print charges.

BLEEDS:
Extend $\frac{1}{8}$ "
past edge
of Dieline

