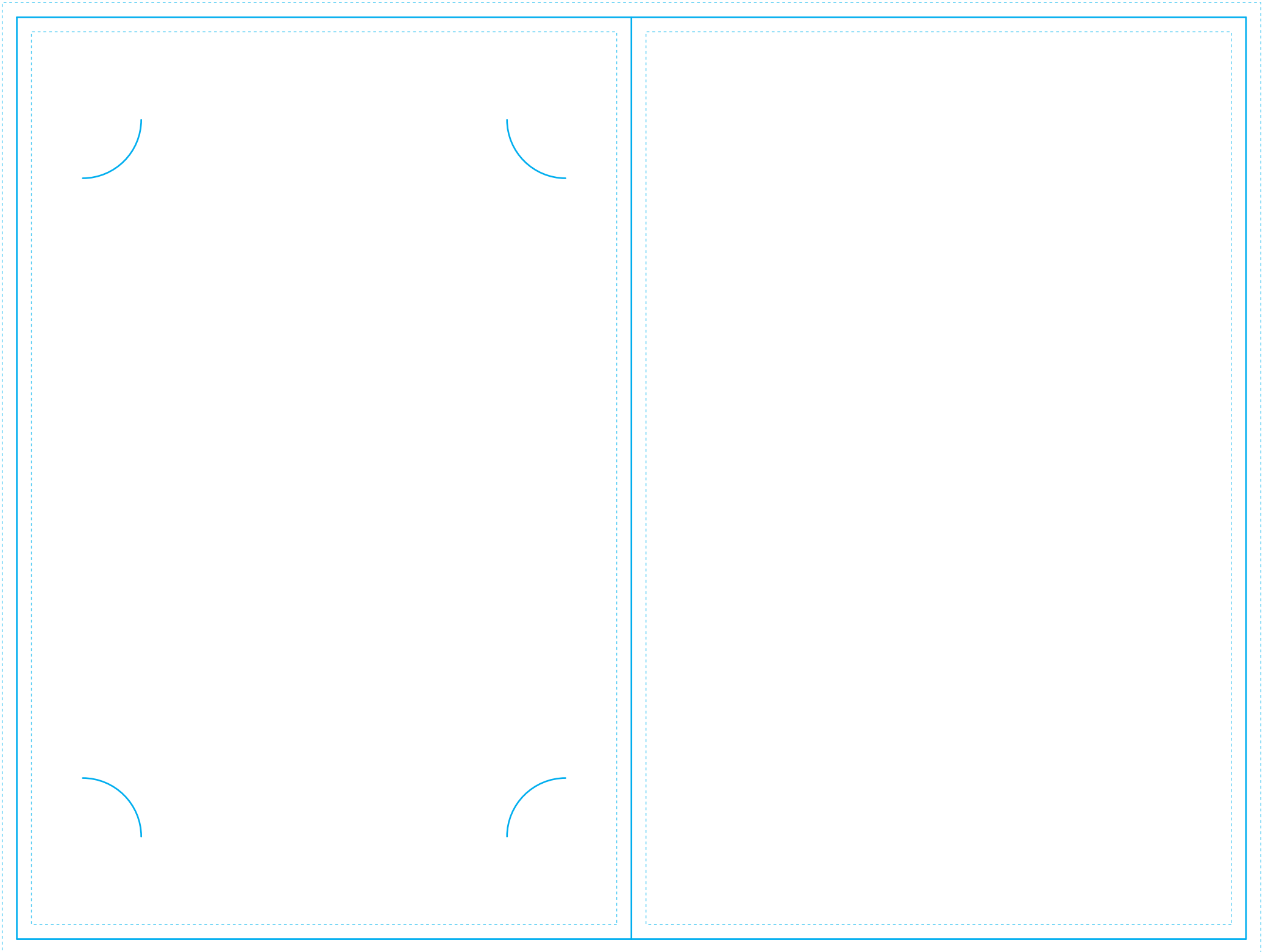


# 50-55-046 Photo Holder

Folded Size: 5<sup>1</sup>/<sub>4</sub>" x 7<sup>7</sup>/<sub>8</sub>"

Can be used vertically or horizontally.  
Holds a standard 4" x 6" photo.

- Bleed: 1/8" past trim edge.
- Safety: Keep text 1/8" away from final trim and scores.



BACK of PHOTO HOLDER

FRONT of PHOTO HOLDER

UP

Front side of card holder

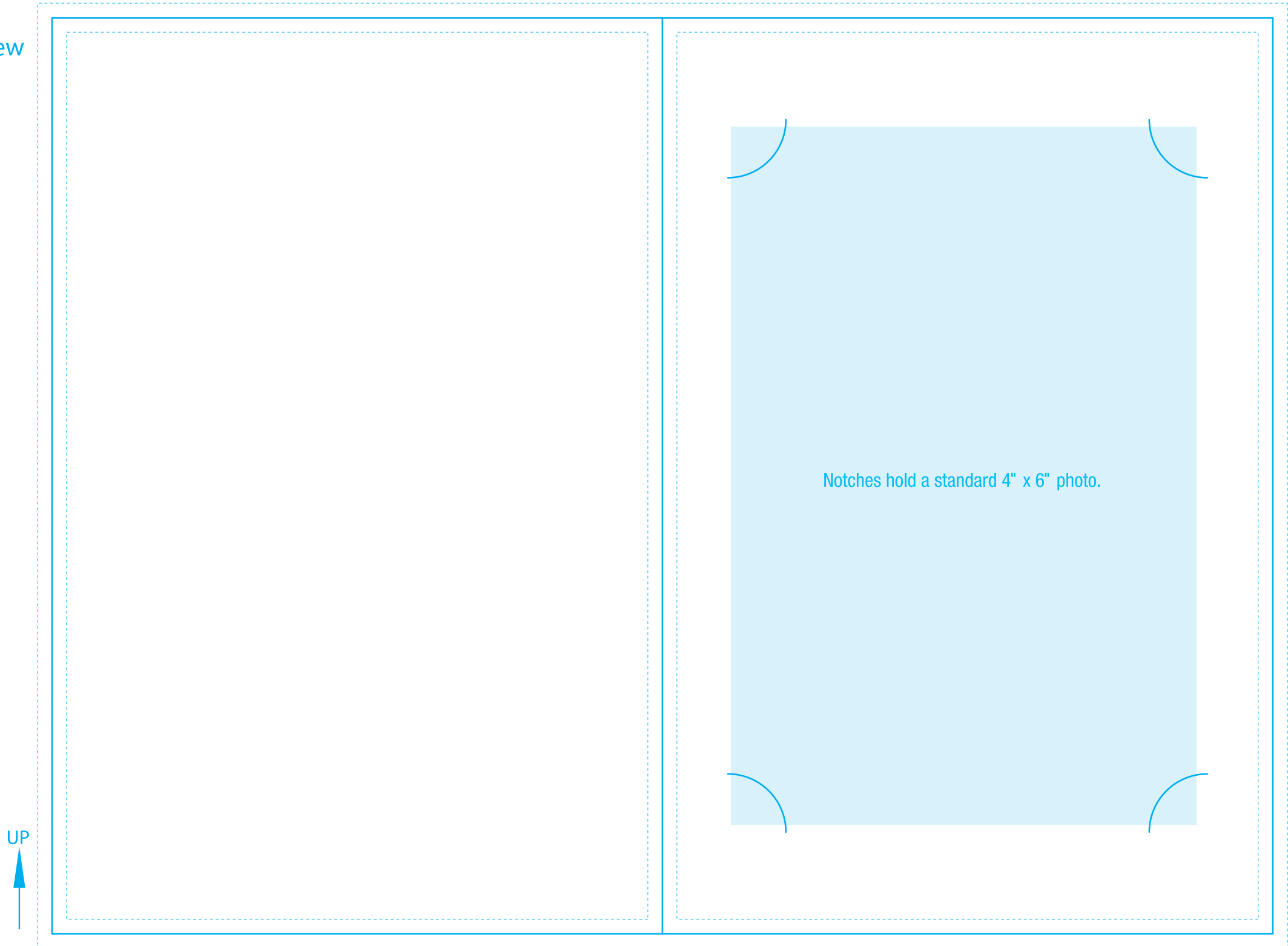
# 50-55-046 Photo Holder

Folded Size: 5<sup>1</sup>/<sub>4</sub>" x 7<sup>7</sup>/<sub>8</sub>"

Can be used vertically or horizontally.  
Holds a standard 4" x 6" photo.

- Bleed: 1/8" past trim edge.
- Safety: Keep text 1/8" away from final trim and scores.

Inside View



UP

Inside Front Cover