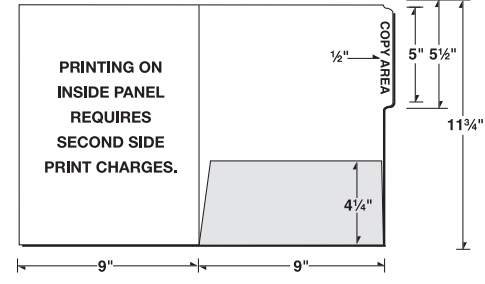
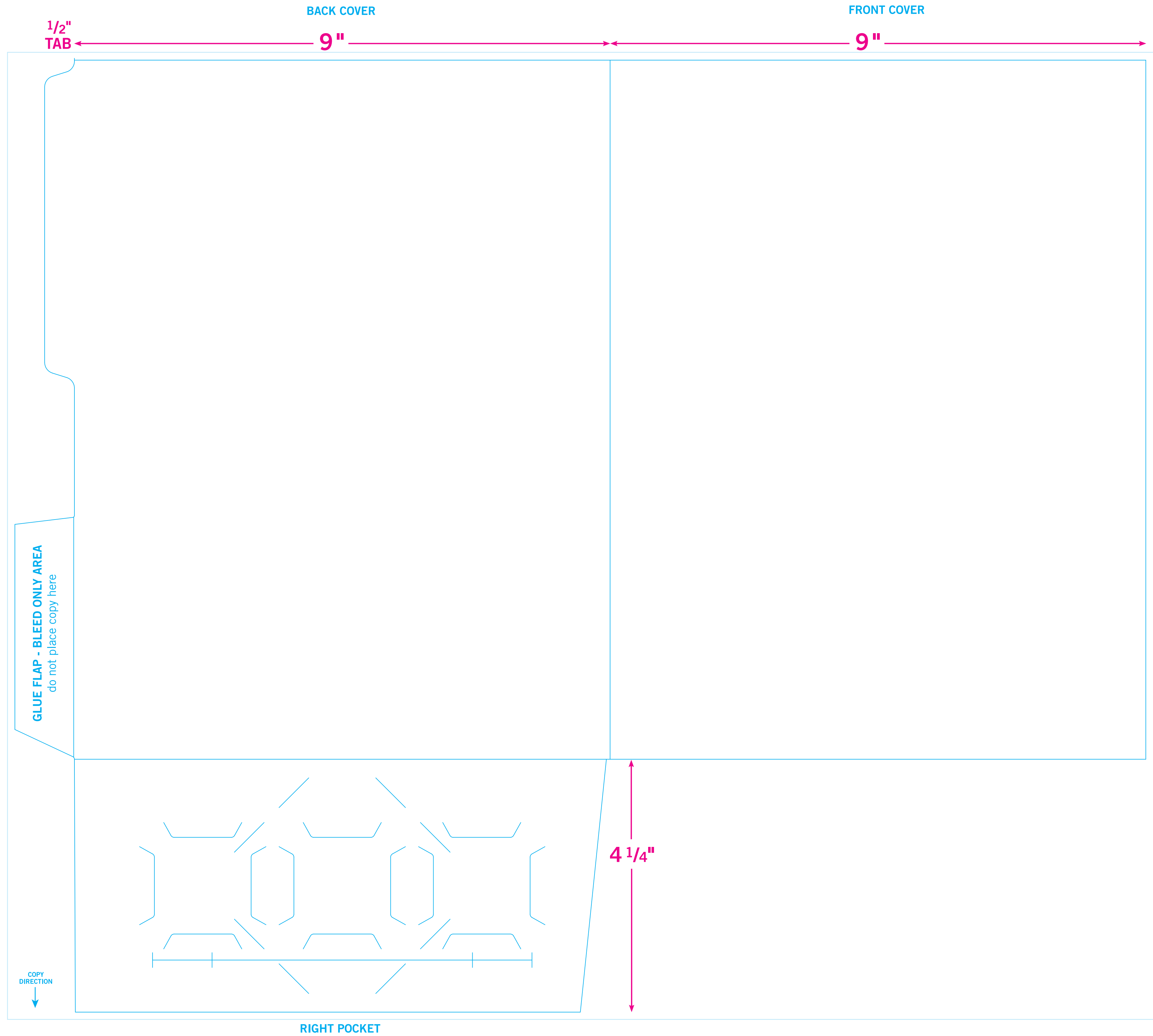


# FRONT SIDE OF PRINTED SHEET

08-21



↑  
COPY DIRECTION

BLEEDS:  
Extend 1/8" past edge of Dieline

11 3/4"

# SECOND SIDE OF PRINTED SHEET

INSIDE FRONT COVER

INSIDE BACK COVER

1/2"  
TAB



BLEEDS:  
Extend 1/8"  
past edge  
of Deline

**Printing on the Inside Panels  
requires second side  
print charges.**

**Printing on the Inside Panels  
requires second side  
print charges.**

**Blue shaded areas will  
be covered when folded and glued.  
Do not place copy here.**

**Bleed only area.**

