

8 7/8"

9"

9"

38-82

8.875" PANEL FOLDS TO INSIDE

BACK COVER

FRONT COVER

COPY DIRECTION ↑

BLEEDS:
Extend 1/8"
past edge
of Deline

GLUE FLAP - BLEED ONLY AREA
do not place copy here

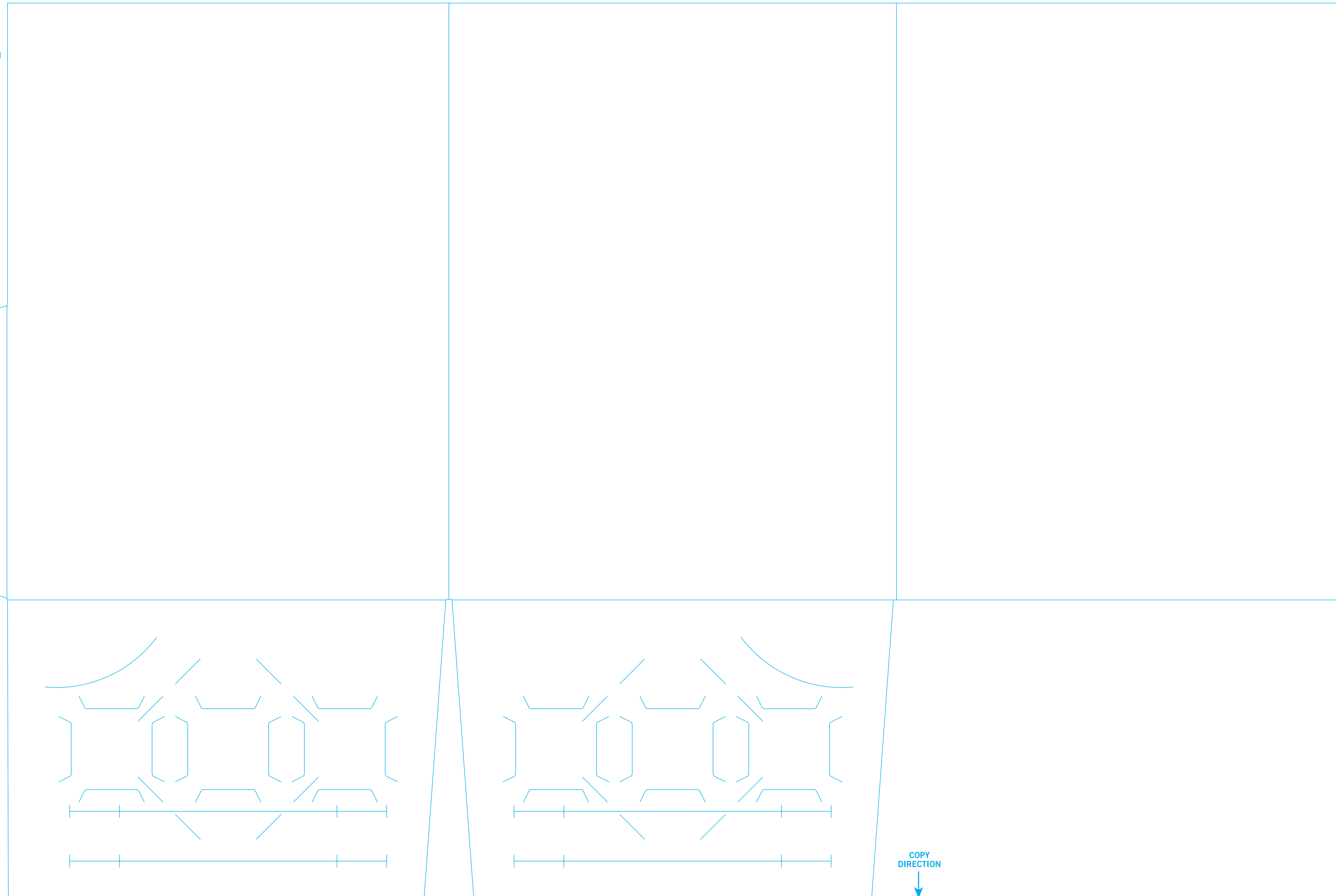
12"

6"

COPY DIRECTION ↓

RIGHT POCKET

CENTER POCKET



9"
INSIDE FRONT COVER

9"
INSIDE BACK COVER

8 7/8"
INSIDE RIGHT PANEL - FOLDS TO INSIDE

Printing on the Inside Panels
requires second side
print charges.

Printing on the Inside Panels
requires second side
print charges.

Printing on the Inside Panels
requires second side
print charges.

12"

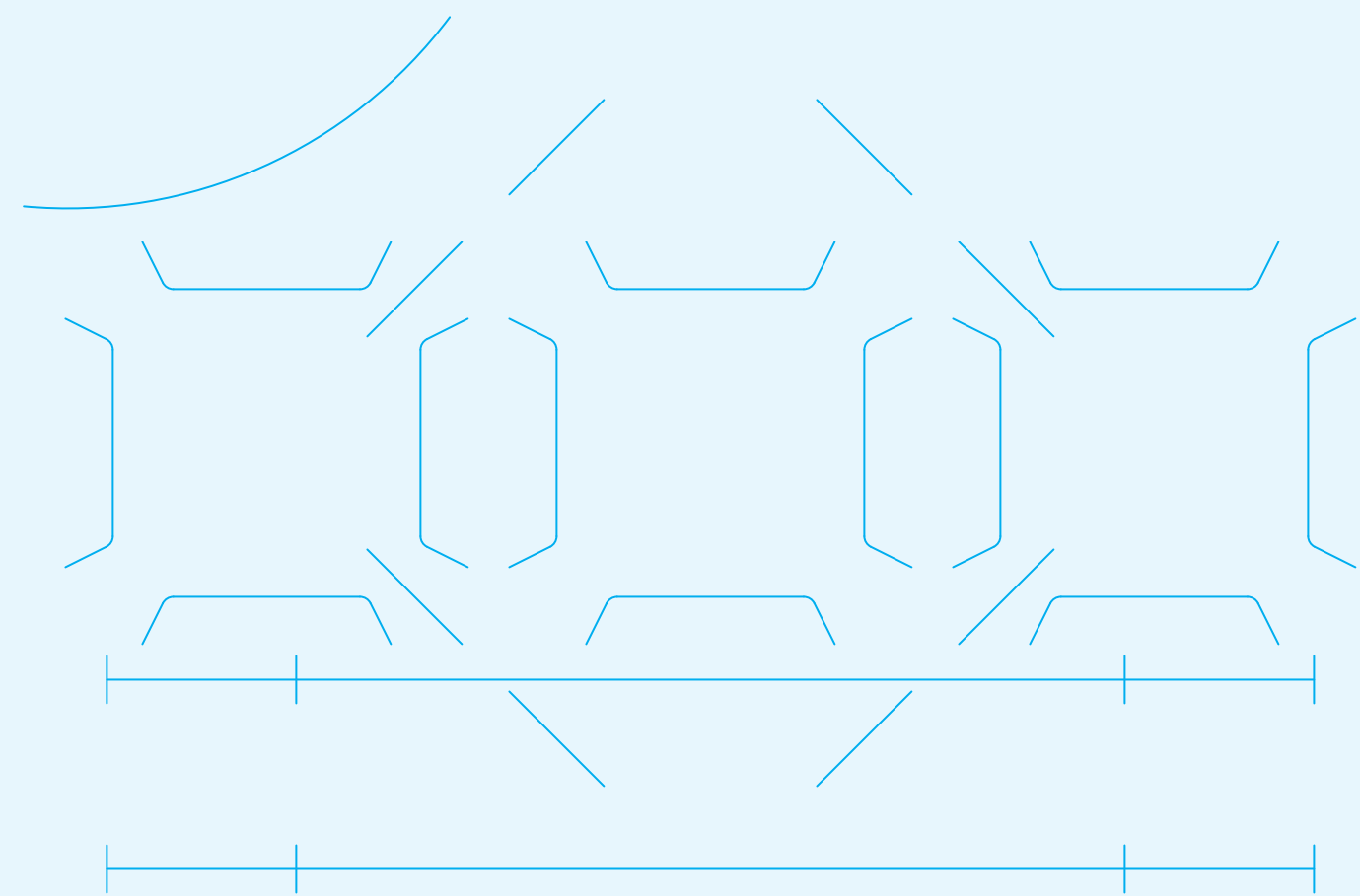
↑
COPY
DIRECTION

BLEEDS:
Extend 1/8"
past edge
of Deline

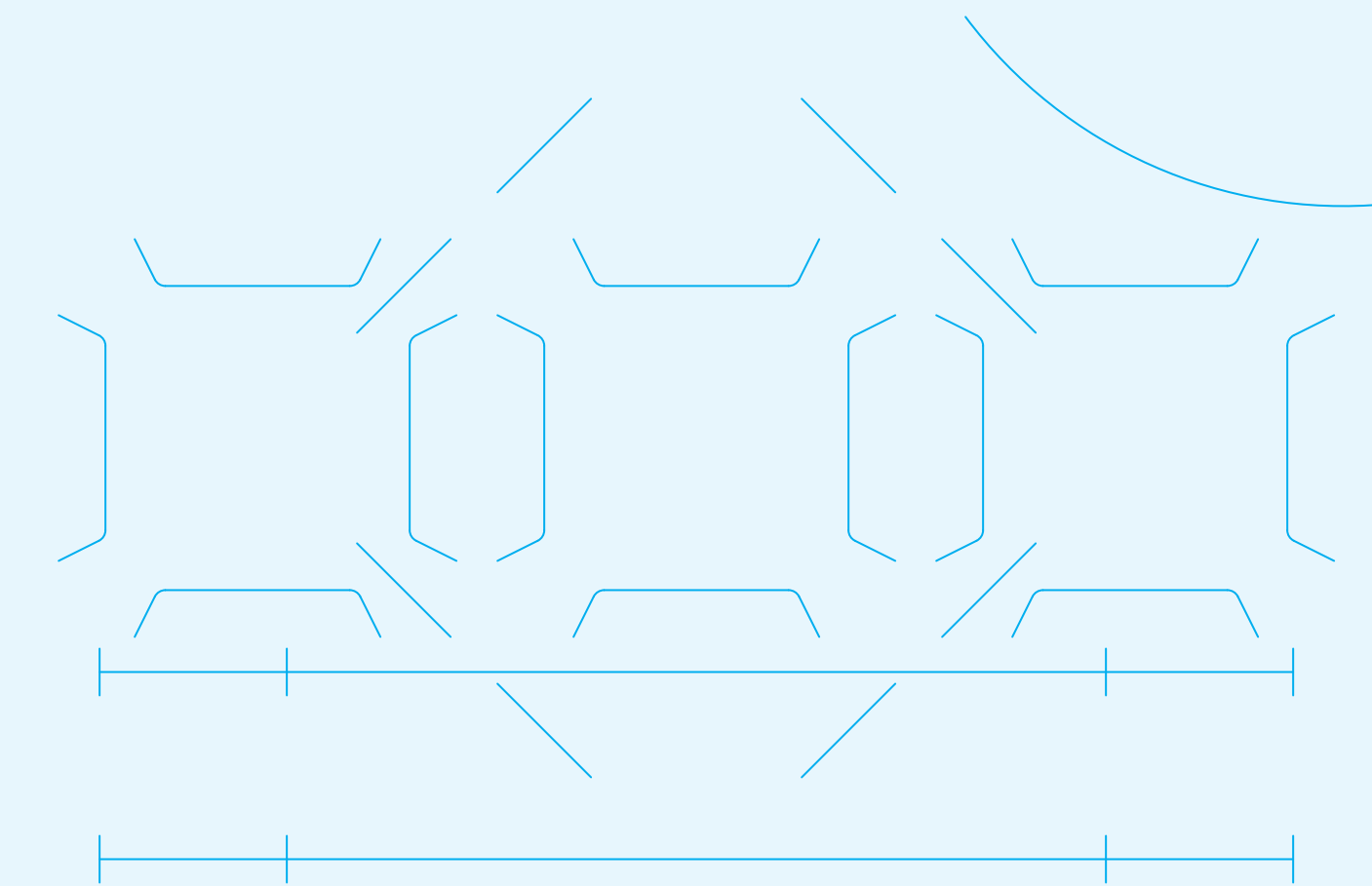
Blue shaded areas will
be covered when folded and glued.
Do not place copy here.
Bleed only area.

Blue shaded areas will
be covered when folded and glued.
Do not place copy here.
Bleed only area.

6"



CENTER POCKET



RIGHT POCKET