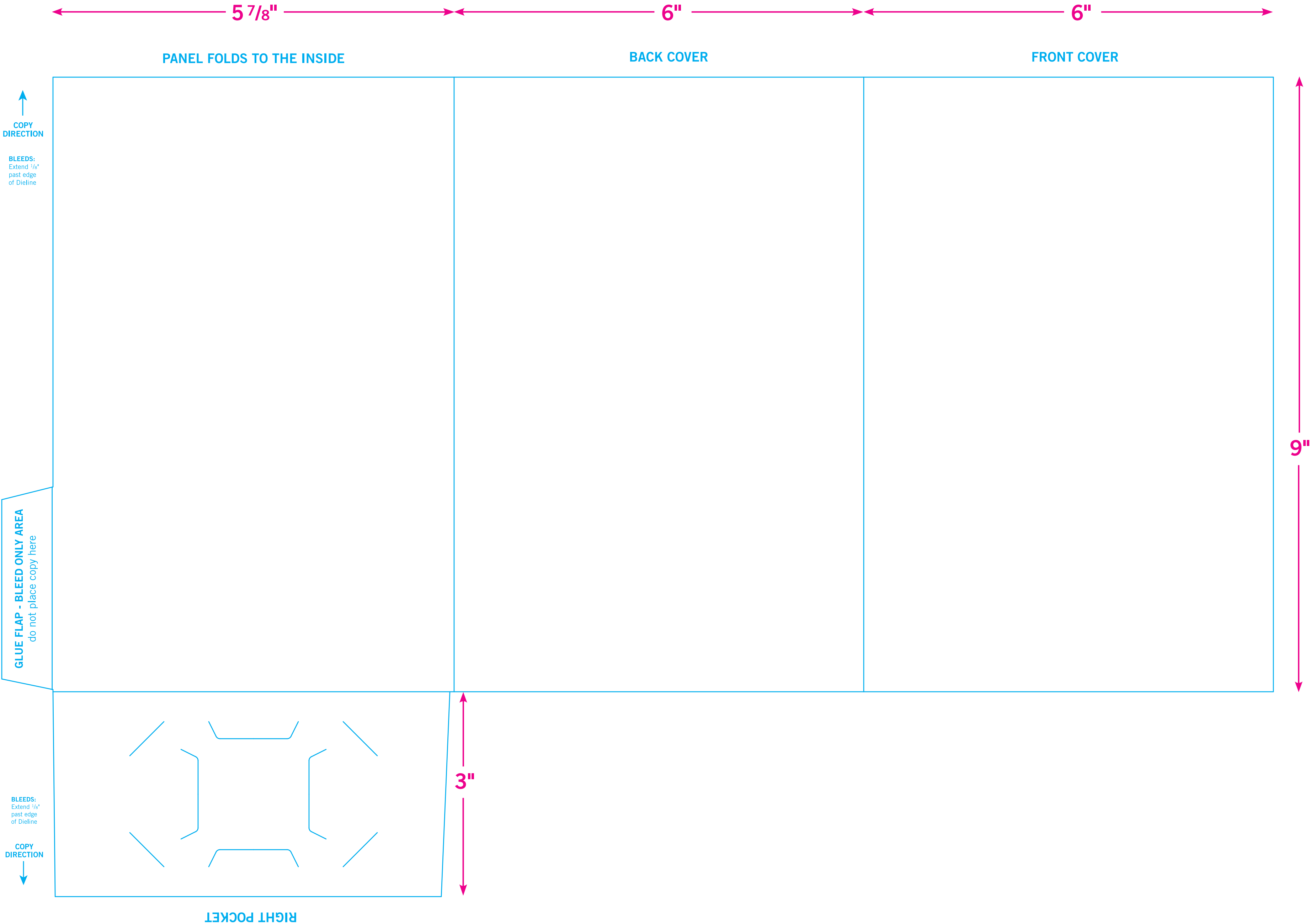
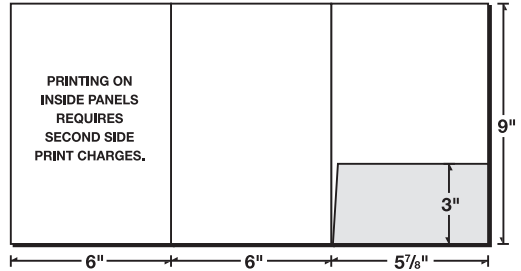


FRONT SIDE OF PRINTED SHEET



68-34



COPY DIRECTION (up arrow)

BLEEDS:
Extend 1/8" past edge of Dieline

SECOND SIDE OF PRINTED SHEET (RSP)

INSIDE FRONT COVER

Printing on the Inside Panels
requires second side
print charges.

INSIDE BACK COVER

Printing on the Inside Panels
requires second side
print charges.

PANEL FOLDS TO THE INSIDE

Printing on the Inside Panels
requires second side
print charges.

Blue shaded areas will be
covered when folded and glued.
Do not place copy here.
Bleed only area.

↑
COPY
DIRECTION

BLEEDS:
Extend 1/8"
past edge
of Dieline