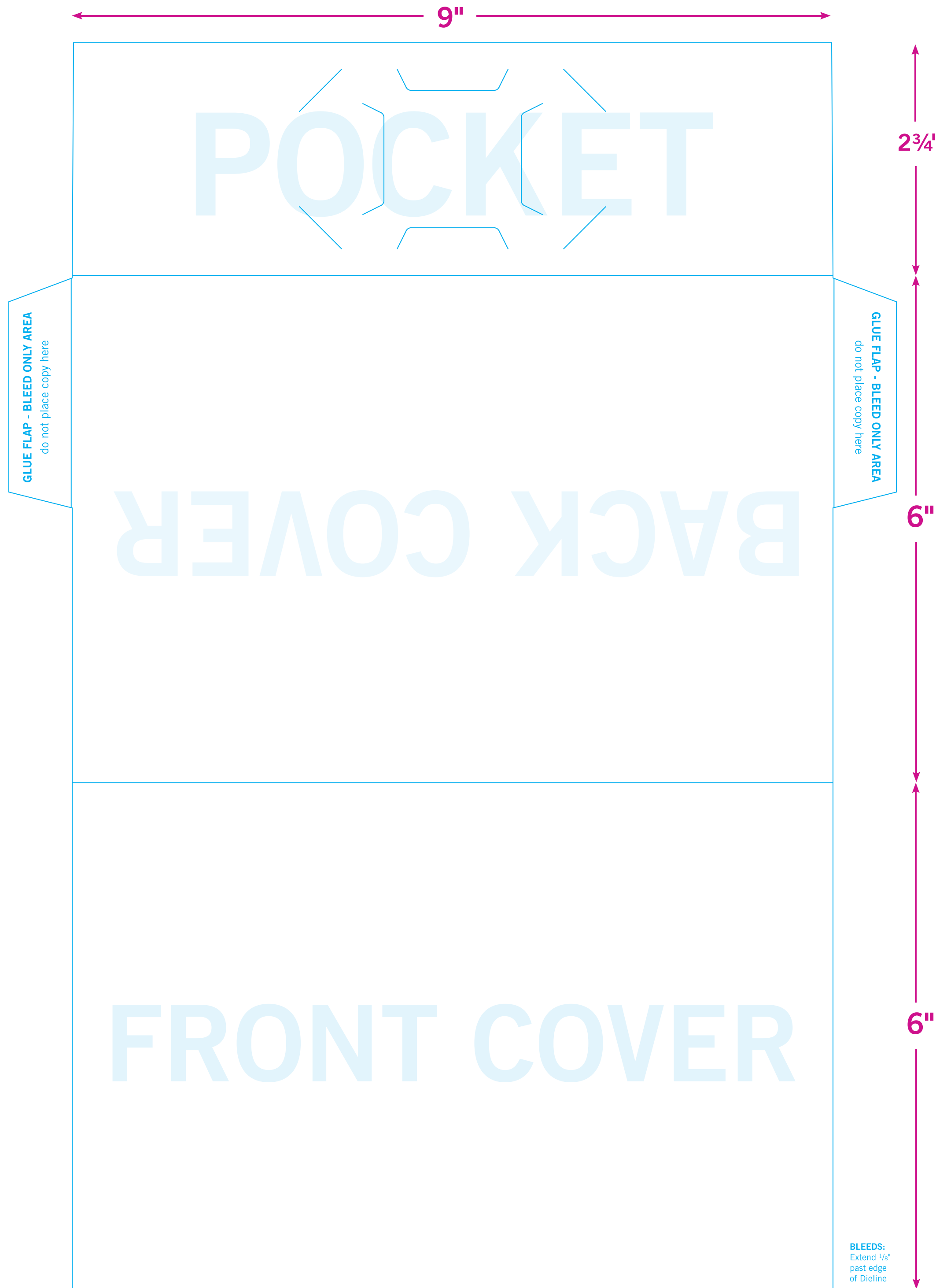
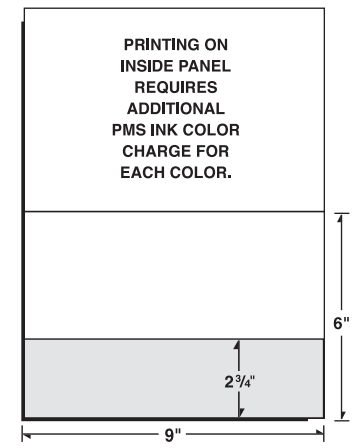


FRONT SIDE OF PRINTED SHEET



68-51



NOTE: This item can be used in either landscape or portrait format.

BLEEDS:
Extend 1/8"
past edge
of Dieline

SECOND SIDE OF SHEET

*PRINTING ON SECOND SIDE REQUIRES ADDITIONAL COST

9"

INSIDE OF FRONT COVER

Printing on Inside Panels
Requires Second Side
Print Charges

6"

INSIDE OF BACK COVER

Shaded Areas Will Be
Covered When Product is Folded.
Do not place important copy here.

6"

2³/₄"

INSIDE OF
POCKET